

Directions

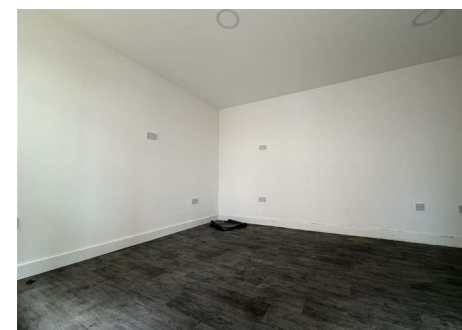
Viewings

Viewings by arrangement only. Call 02087436444 to make an appointment.

EPC Rating

C

Energy Efficiency Rating		Current	Potential
Very energy efficient - lower running costs			
(92 plus) A			
(81-91) B			
(69-80) C		72	
(55-68) D			
(39-54) E			
(21-38) F			
(1-20) G			
Not energy efficient - higher running costs			
England & Wales		EU Directive 2002/91/EC	



94 Lovell Road, Southall, UB1 3LD

£4,400 Per Month

- Spacious 1,238 sq ft house
- Ample living space
- Easy access to transport
- Viewing highly recommended
- Ideal Southall location
- Close to local amenities
- Charming residential area

94 Lovell Road, Southall UB1 3LD

A spacious and well-presented five-bedroom, five-bathroom furnished property situated in a sought-after residential location in Southall. Offering generous living accommodation throughout, this property is ideal for a large family or professional sharers seeking a comfortable and well-connected home.

The accommodation comprises five well-proportioned bedrooms, five bathrooms, a bright reception area, and a fully fitted kitchen with ample storage and workspace. The property is offered fully furnished and is ready for immediate occupation.

Conveniently located close to local shops, schools, parks, and public transport links, the property provides easy access to Southall town centre and surrounding areas.



Council Tax Band: C

